



**Surgical Esthetics™**

*passionate about regeneration*

# Regeneratives

By Dental Professionals

**Bone**

**Membranes**

**Amnion**

**Sutures**

**Instruments**



[clinic@surgicalesthetics.com](mailto:clinic@surgicalesthetics.com) | [www.surgicalesthetics.com](http://www.surgicalesthetics.com)

833-701-5245

©2024 Surgical Esthetics. All rights reserved.



# Surgical Esthetics™

*passionate about regeneration*

## Safety & Testing

### Premium Quality Bone Allografts



#### Our Tissue Bank Quality Systems meet or exceed all:

- FDA Regulations
- AATB Standards
- Federally mandated Current Good Tissue Practice guidelines

#### Donor Eligibility Screening

- Strict quality systems and validated processes ensure patient safety from the initial donor consultation to the surgeon's transplantation of our allograft
- Comprehensive medical and social histories are thoroughly reviewed by qualified personnel on every donor
- All donations are reviewed for eligibility by a qualified and trained Medical Director Recovery technicians are trained by their respective agencies, receiving continuing education to assure consistent knowledge and application of our strict donor acceptance standards
- All our cadaveric tissue donations come from not-for-profit OPOs and recovery agencies

#### Bone Allograft Testing

- All tissue and blood samples are tested for infectious diseases by a CLIA Certified Lab Tissue is thoroughly tested for AIDS, using Nucleic Acid Testing (NAT by TMA), the newest and most reliable test to confirm the absence of HIV and HCV As an accredited member of the American Association of Tissue Banks (AATB), our tissue bank's testing and processing of donated tissue meet or exceed all FDA and AATB regulations, and are tested using FDA-required test kits Comprehensive battery of testing includes:

--HBsAg: Hepatitis B Surface Antigen

--HBcAb: Hepatitis B Core Antibody

--HCVAb: Hepatitis C Antibody

--HBV NAT RPR/STS or Equivalent: Syphilis

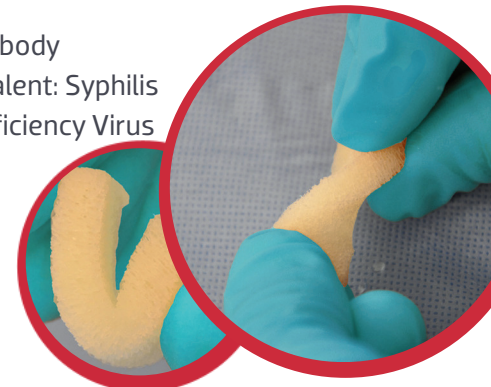
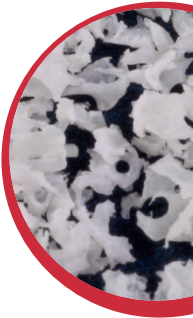
--HCV NAT: Hepatitis C Virus

--HIV NAT: Human Immunodeficiency Virus

--HIV1/2/Ab: Human Immunodeficiency Virus Types 1/2 and O Antibody

#### Bone Allograft Sterilization

- Our allografts are terminally sterilized via low dose gamma irradiation Gamma irradiation dosage was determined by performing a VDMAX validation, and is verified on a quarterly basis Our allografts have a Sterility Assurance Level (SAL) of 10<sup>-6</sup>



[clinic@surgicalesthetics.com](mailto:clinic@surgicalesthetics.com) | [www.surgicalesthetics.com](http://www.surgicalesthetics.com)



**Bone Particulates**

Allograft	Volume	0.25-1.0mm	0.5-1.0mm	0.6-1.25mm	1-2mm
<b>OSSIFY Mineralized Cancellous</b>	0.5cc	BG-010050			BG-011050
	1.0cc	BG-010100			BG-011100
	2.0cc	BG-010200			BG-011200
<b>OSSIFY Mineralized Cortical Cancellous</b>	0.25cc			BG-012025	
	0.5cc			BG-012050	BG-013050
	1.0cc			BG-012100	BG-013100
	2.0cc			BG-012200	BG-013200
<b>OSSIFY Mineralized Cortical</b>	0.5cc	BG-014050			
	1.0cc	BG-014100			
	2.0cc	BG-014200			
<b>OSSIFY Min/Demin Cortical Cancellous</b>	0.5cc		BG-017050		
	1.0cc		BG-017100		
	2.0cc		BG-017200		
<b>OSSIFY Demineralized Cortical</b>	0.5cc	BG-020050			
	1.0cc	BG-020100			
	2.0cc	BG-020200			

**Sponge Strips**

Allograft	Size	SKU
<b>OSSIFY Demineralized Sponge Strip</b>	10x6x7	BG-024010
	20x6x7	BG-024020

**Cortical Fibers**

Allograft	Volume	SKU
<b>OSSIFY Demineralized Cortical Fibers</b>	0.5c	CF-028050
	1.0cc	CF-028100
	2.5cc	CF-028250

**Dermis**

Allograft Products	Size	1.0-1.5mm Thickness	2.5-3.0mm Thickness
<b>GingiDerm Acellular Dermis</b>	10x10mm	GD10X10	GDP10X10
	10x20mm	GD10X20	GDP10X20
	10x40mm	GD10X40	GDP10X40
	20x40mm	GD20X40	GDP10X40

**Sponge Filler**

Allograft	Volume	1-4mm
<b>OSSIFY Demineralized Sponge Particulate</b>	0.75cc	BG-025075
	1.0cc	BG-025100

**DBM Putty**

Allograft	Volume	SKU
<b>DBM Putty</b>	0.5cc	PCR050
	1.0cc	PPTT100
<b>DBM Putty w/ Canc. Chips</b>	1.0cc	PCCR100MC

**Amnion-Chorion**

Allograft Products	Size	SKU
<b>AmnioGain Amnion-Chorion Membrane</b>	10x10mm	AGAC10X10
	10x20mm	AGAC10X20
	10x40mm	AGAC10X40
	20x40mm	AGAC20X40

**Laminar Bone Sheets**

Allograft	15x20mm	20x30mm
<b>Demineralized Cortical Sheet</b>	LBS15X20	LBS20X30



# Xenograft, Synthetic, Collagen

Xenograft	Volume	0.25-1.0mm
InterOss Xenograft Particulate	0.25g/0.5cc	IX-010025
	0.5g/1.0cc	IX-010050
	1.0g/2.0cc	IX-010100
	2.0g/4.0cc	IX-010200

Synthetic Membranes	Size	12x24mm	25x30mm
Cytoflex-SE PTFE Membrane	Single	PTFE12X24	PTFE25X30
	5 pack	PTFE12X24-5	PTFE25X30-5
Cytoflex Titanium Reinforced PTFE Membrane	Single	PTFE12X24TI	PTFE25X30TI

Xenograft Products	Size	SKU
CollaShield Collagen Membrane (3-4 mo. resorption)	15x20mm	CS15X20
	20x30mm	CS20X30
	30x40mm	CS30X40
CollaShield Extend Collagen Membrane (6-9 mo. resorption)	15x20mm	CSE15X20
	20x30mm	CSE20X30
	30x40mm	CSE30X40
HealiAid / CollaFill Collagen Plug**	10x20mm	HACOLLP
	15x20mm	HACOLLPL
	10x20mm	CFP10

\*\*10 plugs per box

Synthetic Graft	10x20mm	6x25mm
RegenaFill Bone Graft Plug*	RFP10x20	RFP6X25

\*5 plugs per box

## Sutures

Material	Needle	3/0	4/0	5/0	6/0
PTFE	FS-2	TE153019F4P			
	FS-3		TE154016F4P		
	P-3		TE154013F13M	TE155013F13M	
Silk	FS-2	SK163019F4P			
	FS-3		SK164016F4P		
Chromic Gut	FS-2	CC123019F4P			
	FS-3		CC124016F4P		
Polypropylene	FS-3			RP5FS3	
	P-3			RP5P3	RP6P3
PGLA	FS-2		V4FS2		
	P-3			V5P3	V6P3
PGCL	FS-2		MQ4FS2		
	PS-2		MQ4PS2		
	P-3			MQ5P3	

## Instruments

Instrument Kits	SKU
Dr. Frawley Grafting Kit	FGK-Mini
Dr. Frawley Grafting Kit + Sinus Kit	FRAGRAFT-2
Dr. Frawley Sinus Kit	FGK-Sinus







# Surgical Esthetics™

*passionate about regeneration*

## OSSIFY® Bone Allograft

Particulate

Putty

Sponge



**Unique Particle Design & Processing**  
3 month post-extraction reveals complete bone fill,  
with no residual graft particulate.

5yr Shelf-life

Allograft	Volume	0.25-1.0mm	0.5-1.0mm	0.6-1.25mm	1-2mm
Mineralized Cancellous	0.5cc	BG-010050			BG-011050
	1.0cc	BG-010100			BG-011100
	2.0cc	BG-010200			BG-011200
Mineralized Cortical Cancellous	0.25cc			BG-012025	
	0.5cc			BG-012050	BG-013050
	1.0cc			BG-012100	BG-013100
	2.0cc			BG-012200	BG-013200
Mineralized Cortical	0.5cc	BG-014050			
	1.0cc	BG-014100			
	2.0cc	BG-014200			
Min/Demin Cortical Cancellous	0.5cc		BG-017050		
	1.0cc		BG-017100		
	2.0cc		BG-017200		
Demineralized Cortical	0.5cc	BG-020050			
	1.0cc	BG-020100			
	2.0cc	BG-020200			

[clinic@surgicalesthetics.com](mailto:clinic@surgicalesthetics.com) | [www.surgicalesthetics.com](http://www.surgicalesthetics.com)

## Mineralized Cortical-Cancellous Mix

- Mixture mimics native composition of human bone Cancellous (~30-40%) provides ideal porosity for rapid clot formation
- Cortical (~60-70%) provides excellent space maintenance with slower resorption



## Mineralized Cancellous

- Ideal inner surface area and porosity allows for immediate, stable clot formation
- Mineralized bone provides osteoconductive scaffold for efficient turnover to vital host bone
- Optimal particle structure and shape for natural and complete bone fill

## Mineralized Cortical

- Mineralized bone provides osteoconductive scaffold for efficient turnover to vital host bone
- Cortical bone provides excellent space maintenance with slower resorption
- Optimal particle density for long-term volume maintenance



## Demineralized Cancellous Sponge

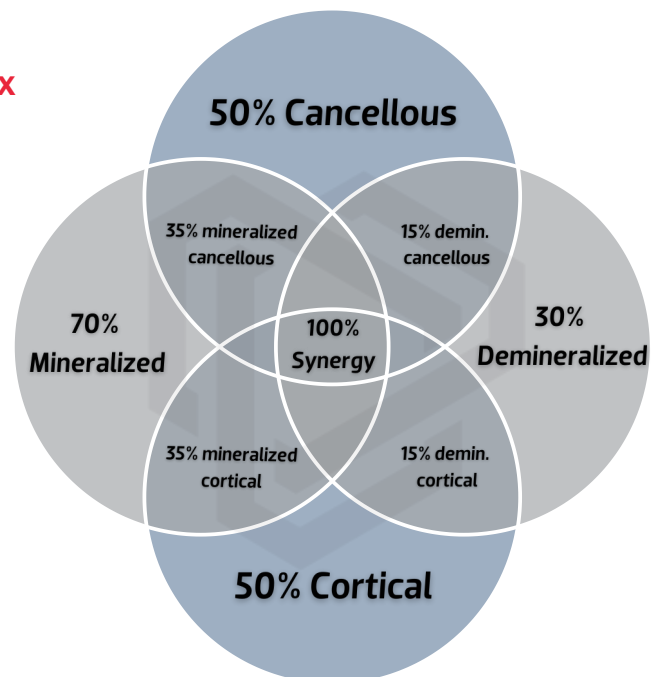
- Demineralized bone promotes osteoinductive BMP activity for ectopic bone generation
- Compresses during placement, yet expands to maintain space
- Rapidly absorbs blood for quick, stable clot formation
- Unlike block grafts, Sponge Strip won't cause exposures or soft tissue perforation

## Demineralized Cortical

- Demineralized bone can promote osteoinductive BMP activity
- Excellent for small periodontal defects
- Optimal particle density for clot stability

## Mineralized - Demineralized / Cortical-Cancellous Mix

- 50% Cancellous / 50% Cortical
- 70% Mineralized / 30% Demineralized
- Osteoconductive matrix combined with osteoinductive potential
- Every allograft configuration in one graft
- One graft for every situation





# Surgical Esthetics™

*passionate about regeneration*

## OSSIFY® Bone Allograft

### DBM Putty



### Advantages

- 100% human allograft
- 0% fillers or additives
- Ideal remineralization profile
- Available w/ bone graft

### Common Uses:

- Extraction ridge preservation
- Ridge augmentation
- Lateral sinus lifts
- Crestal sinus lifts



### Configurations:

- |                                       |            |
|---------------------------------------|------------|
| 0.5cc MatrixCollect DBM Putty         | (PCR050)   |
| 1.0cc Apex DBM Putty                  | (PPTT100)  |
| 1.0cc MatrixCollect DBM Putty + Chips | (PCR100MC) |

[clinic@surgicalesthetics.com](mailto:clinic@surgicalesthetics.com) | [www.surgicalesthetics.com](http://www.surgicalesthetics.com)





# Surgical Esthetics™

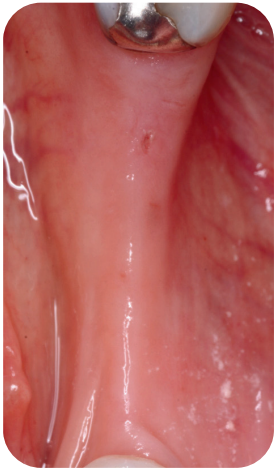
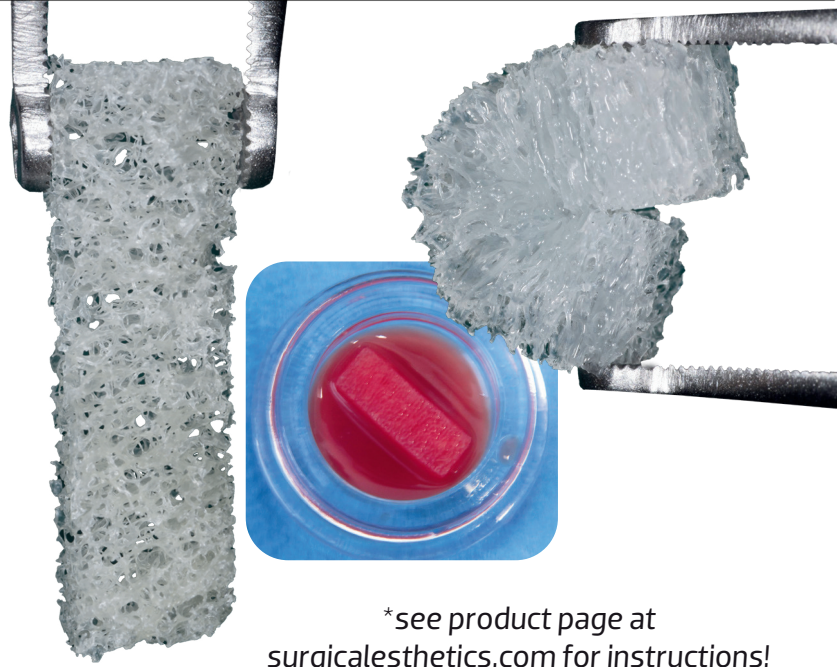
*passionate about regeneration*

## OSSIFY® Bone Allograft

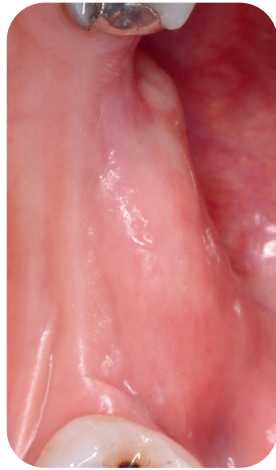
### DBM Sponge Block

#### Common Uses:

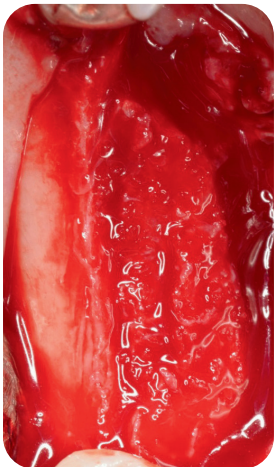
- Extraction ridge preservation
- Vertical & horizontal ridge augmentation
- Advanced Guided Bone Regeneration
- Sinus augmentation
- Block graft alternative



Pre-op



3mos PO tunnel



3mos PO tunnel



6mos implant placement

#### Features & Benefits:

- 100% human allograft · 0% fillers or additives
- Will hold spacial dimension in a defect\* Soft texture doesn't perforate soft tissue\*
- Remineralizes in 6-9 months\*
- Typically doesn't require fixation (when passive stability is achieved)\*
- Can be trimmed to size

#### Sizes:

10x6x7mm BG-024010

20x6x7mm BG-024020

[clinic@surgicalesthetics.com](mailto:clinic@surgicalesthetics.com) | [www.surgicalesthetics.com](http://www.surgicalesthetics.com)

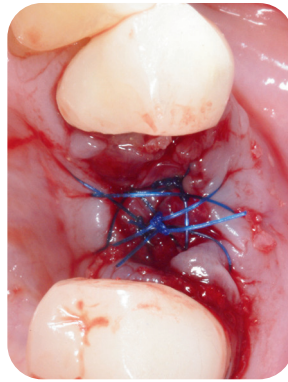


# Surgical Esthetics™

passionate about regeneration

## AmnioGain®

### Amniotic Allografts



### Versatility:

- Socket ridge preservation
- Sinus perforation repair
- Implants
- Guided Bone Regeneration
- Guided Tissue Regeneration
- Wound or Defect Repair

## When Outcomes Matter...

# Biology Matters

### Amnion + Chorion

- Flexible & Easy to Handle
- Strong & Protective Covering
- Natural Cushion
- Cellular Scaffold
- Immunogenic Properties
- Growth Factors & Cytokines
- Safe, Screened, Cleansed
- Shelf-stable



As shown, wrapped around GingiDerm® dermis



### Patented



### Process!

### Sizes:

10x10mm Sheet	AGAC10x10
10x20mm Sheet	AGAC10x20
10x40mm Sheet	AGAC10x40
20x40mm Sheet	AGAC20x40



7 day Post-op



[clinic@surgicalesthetics.com](mailto:clinic@surgicalesthetics.com) | [www.surgicalesthetics.com](http://www.surgicalesthetics.com)





# Surgical Esthetics™

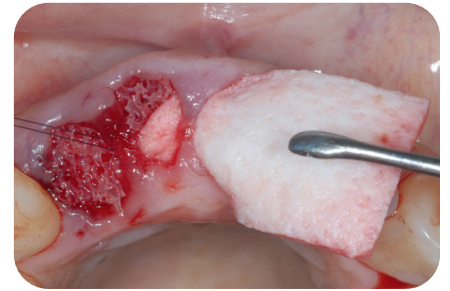
*passionate about regeneration*

## GingiDerm®

### Acellular Dermis

#### Common Uses:

- Root coverage
- Tunneling techniques
- Gingival augmentation around implants
- Socket ridge preservation



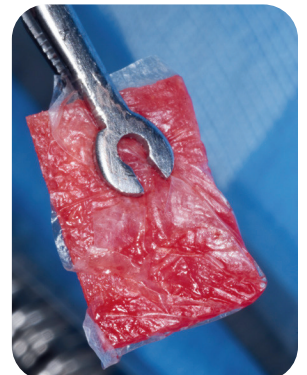
#### Advanced Technology

- Absent of cellular components
- Preserved biological properties essential for regeneration
- Ideal thickness for hard- and soft-tissue procedures
- 100% human dermal tissue
- Orientation not required!
- There's no "right-side-up/down", for easy placement
- Ambient room temperature storage
- Promotes revascularization



#### Sizes:

10x10mm	GD10x10
10x20mm	GD10x20
10x40mm	GD10x40
20x40mm	GD20x40



As shown, wrapped by an AmnioGain® Sheet

[clinic@surgicalesthetics.com](mailto:clinic@surgicalesthetics.com) | [www.surgicalesthetics.com](http://www.surgicalesthetics.com)



# Surgical Esthetics™

*passionate about regeneration*

## Regenafill®

### Bone Graft Plug



.....It's so easy, it's  
PLUG and play

## Socket Grafting Made Simple

6 x 25 mm

Anteriors



RFP6X25 6 x 25mm (5-pack)



10 x 20 mm

Posteriors

RFP10X20 10 x 20mm (5-pack)

Mineral structure  
similar to bone

80% mineral  
20% Collagen

Cost Effective  
bone graft

No membrane needed  
in most cases

Stable clot for  
excellent bone fill

[clinic@surgicalesthetics.com](mailto:clinic@surgicalesthetics.com) | [www.surgicalesthetics.com](http://www.surgicalesthetics.com)



# Surgical Esthetics™

*passionate about regeneration*

## HealiAid® & CollaFill® Collagen



### Features & Benefits:

- Highly purified Type I bovine collagen
- High-density for added resilience
- Easily trimmed according to clinical needs
- Fully Absorbable
- Can easily be shaped by hand
- Extraction socket graft coverage
- Hemostasis
- 3rd molar extractions
- Soft tissue repair
- Free gingival graft donor sites



#### SKU

CFP10	CollaFill 10x20mm	10-pack
HACOLLP	HealiAid 10x20mm	10-pack
HACOLLPL	HealiAid 15x20mm	10-pack

[clinic@surgicalesthetics.com](mailto:clinic@surgicalesthetics.com) | [www.surgicalesthetics.com](http://www.surgicalesthetics.com)



**Surgical Esthetics™**  
*passionate about regeneration*

# CollaShield®

## Absorbable Membranes

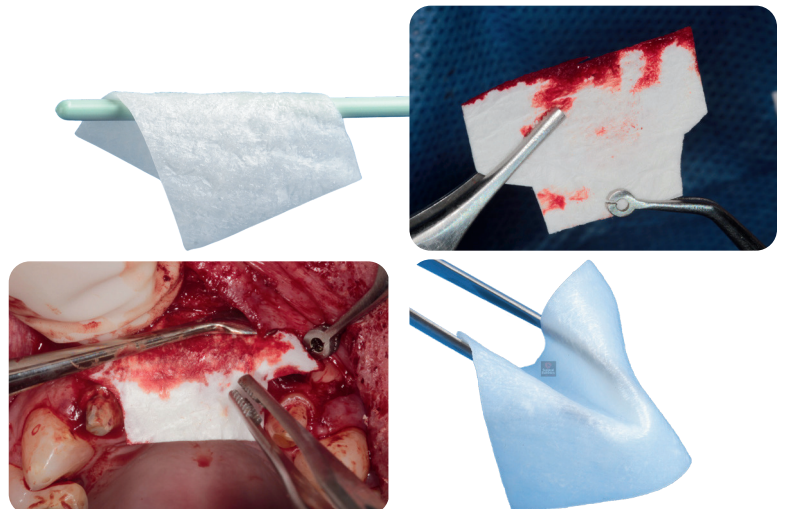
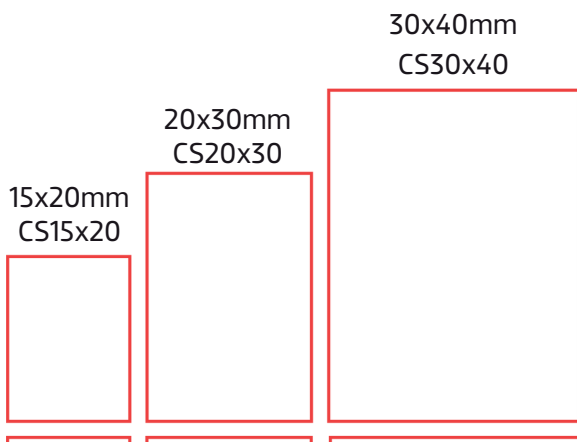
### Common Uses:

- Extraction ridge preservation
- Periodontal defect repair
- Vertical & horizontal ridge augmentation
- Bone regeneration around teeth and implants
- Sinus augmentation
- Membrane technique utilizing tacks



### Features & Benefits:

- Highly purified porcine peritoneum tissue
- Excellent biocompatibility
- Easily trimmed & adapted to defect site
- Mechanically strong, yet drapable
- Fully Absorbable (~3-4mos)
- Cell Occlusive - inhibits undesired epithelial ingrowth
- Can be tacked or sutured in place



[clinic@surgicalesthetics.com](mailto:clinic@surgicalesthetics.com) | [www.surgicalesthetics.com](http://www.surgicalesthetics.com)



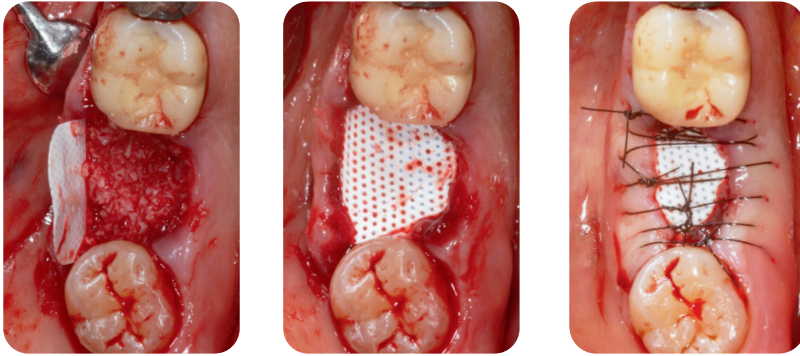
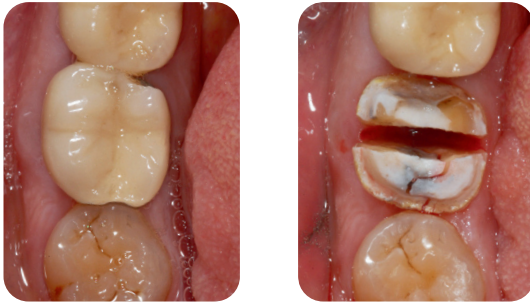


# Surgical Esthetics™

passionate about regeneration

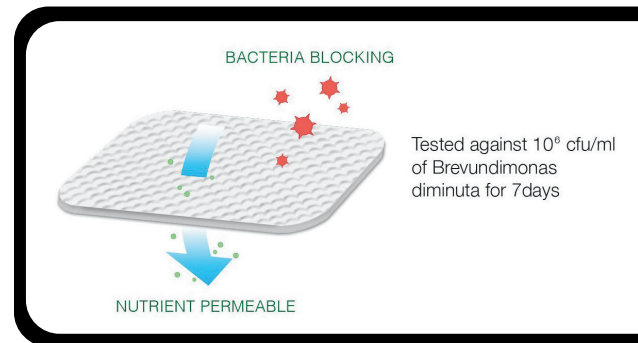
## Cytoflex-SE® PTFE

### Non-Absorbable Membranes



### Common Uses:

- Extraction ridge preservation
- Periodontal defect repair
- Guided bone regeneration (GBR)
- Guided tissue regeneration (GTR)



### Features & Benefits:

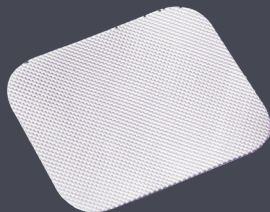
- Easily trimmed & adapted to tissue contours
- Microporous structure inhibits bacterial penetration
- Allows interstitial fluid flow for improved healing
- Textured surface holds membrane position during healing
- Can be tacked in place

Cytoflex-SE®



12x24mm

(Single: PTFE12x24)  
(5-pack: PTFE12x24-5)  
(10-pack: PTFE12x24-10)



25x30mm

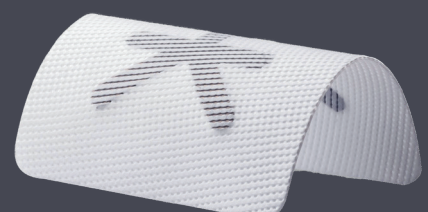
(Single: PTFE25x30) (5-pack: PTFE25x30-5)

Cytoflex® Titanium Reinforced



12x24mm

(PTFE12x24Ti)



25x30mm

(PTFE25x30Ti)





# Surgical Esthetics™

*passionate about regeneration*

## Premium Sutures

### Absorbable & Non-Absorbable



<b>FS-2</b> Reverse Cutting 19mm 3/8 Circle	<b>FS-3</b> Reverse Cutting 16mm 3/8 Circle	<b>P-3</b> Premium Reverse Cutting 13mm 3/8 Circle	<b>PS-2</b> Premium Reverse Cutting 19mm 3/8 Circle

Material	Needle	3/0	4/0	5/0	6/0
PTFE	FS-2	TE153019F4P			
	FS-3		TE154016F4P		
	P-3		TE154013F13M	TE155013F13M	
Silk	FS-2	SK163019F4P			
	FS-3		SK164016F4P		
Chromic Gut	FS-2	CC123019F4P			
	FS-3		CC124016F4P		
Polypropylene	FS-3			RP5FS3	
	P-3			RP5P3	RP6P3
PGLA	FS-2		V4FS2		
	P-3			V5P3	V6P3
PGCL	FS-2		MQ4FS2		
	PS-2		MQ4PS2		
	P-3			MQ5P3	

[clinic@surgicalesthetics.com](mailto:clinic@surgicalesthetics.com) | [www.surgicalesthetics.com](http://www.surgicalesthetics.com)



# Surgical Esthetics™

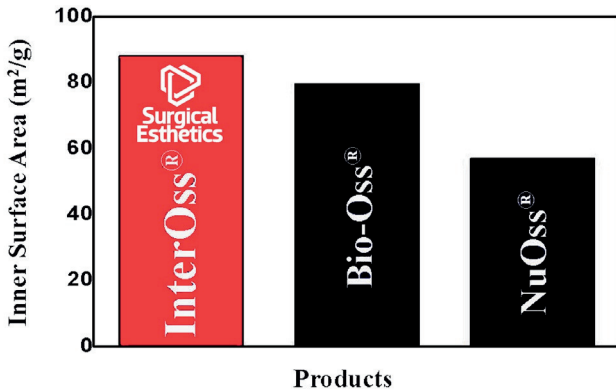
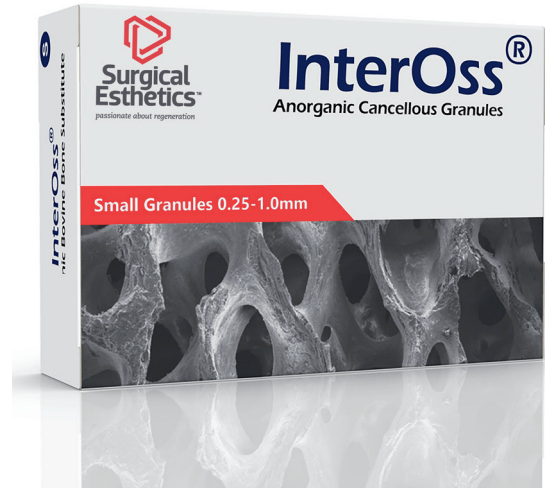
passionate about regeneration

## InterOss® Bone Xenograft

### Bovine Particulate

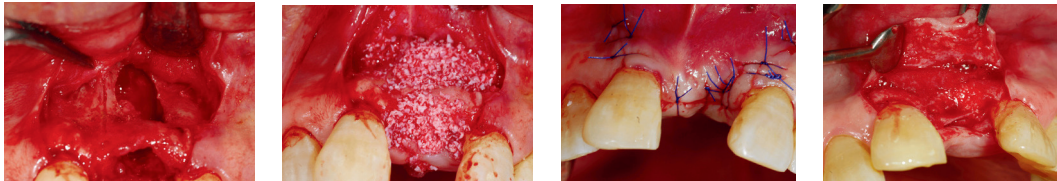
#### Indications:

- Sinus elevation
- Periodontal defect repair
- Vertical & horizontal ridge augmentation
- Advanced guided bone regeneration (GBR)



#### InterOss

is a natural hydroxyapatite bone grafting material derived from a closed, BSE-free Australian herd. The highly purified osteoconductive material is produced from natural bone through a multi-step purification process, and yields a nanocrystalline structure similar to mineralized human bone. The macroporous structure, with excellent inner surface area, promotes cellular ingrowth while fostering a favorable resorption and dissolution profile.



Particle Size	Product Code	Description
.25-1mm	IX-010025	InterOss Anorganic Cancellous Xenograft, .25-1mm, .25g / 0.5cc
	IX-010050	InterOss Anorganic Cancellous Xenograft, .25-1mm, 0.5g / 1.0cc
	IX-010100	InterOss Anorganic Cancellous Xenograft, .25-1mm, 1.0g / 2.0cc
	IX-010200	InterOss Anorganic Cancellous Xenograft, .25-1mm, 2.0g / 4.0cc

**Sterilization:** InterOss is sterilized using gamma irradiation. Appropriate aseptic technique should be observed in all procedures, and packaging should be inspected prior to use, to ensure that the sterile seal has not been compromised.

**Storage:** InterOss should be stored in a dry, clean, ventilated area at ambient temperature 59-77F

Ref: [https://www.surgicalesthetics.com/inteross-xenograft\\_study\\_1-surface-area-only/](https://www.surgicalesthetics.com/inteross-xenograft_study_1-surface-area-only/)



# Surgical Esthetics

*passionate about regeneration*

## Graft & Implant Surgery

### Dr. Frawley Grafting Instrument Kit

Incise & Release



(sku FGK-Mini)

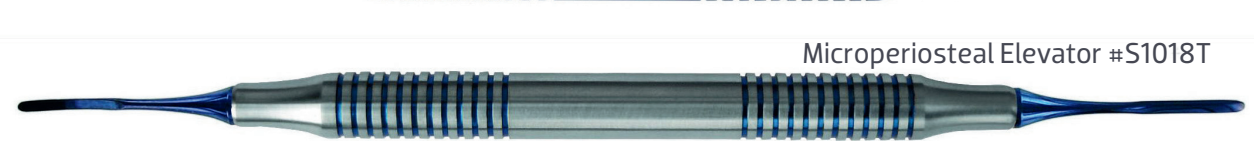
Adjustable Scalpel Handle #S1192



Microblade Handle #S1280



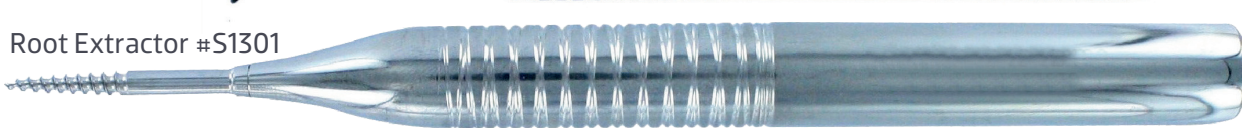
Molt #S1117



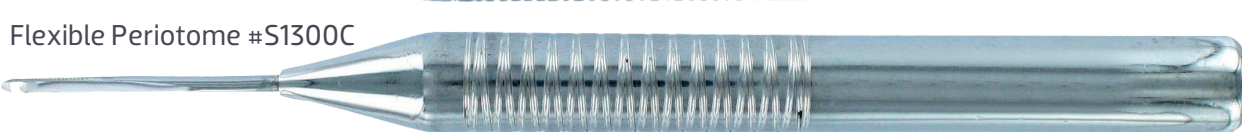
Microperiosteal Elevator #S1018T



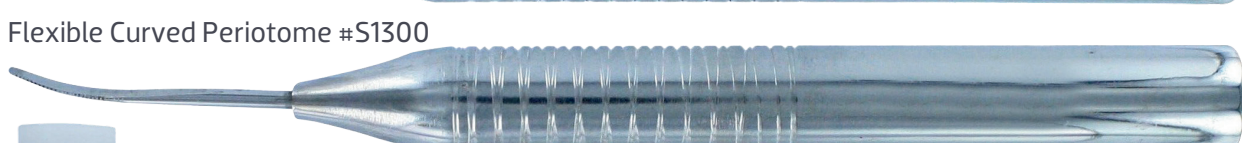
Woodson Elevator #S1109



Root Extractor #S1301



Flexible Periosteal #S1300C



Flexible Curved Periosteal #S1300



Mallet #S1127



Minnesota Retractor #S1180



Cassette #S1261



Serrated Scissor #S1179TC

Extraction Aids



Serrated Currettes Set of 4: 2.4mm-5mm (#S1110S, S1111S, S1112S, S1114S)



Chisel Scaler #S1020T

Site  
Preparation



Regenerative Material  
Placement



Bone Syringe #S1060

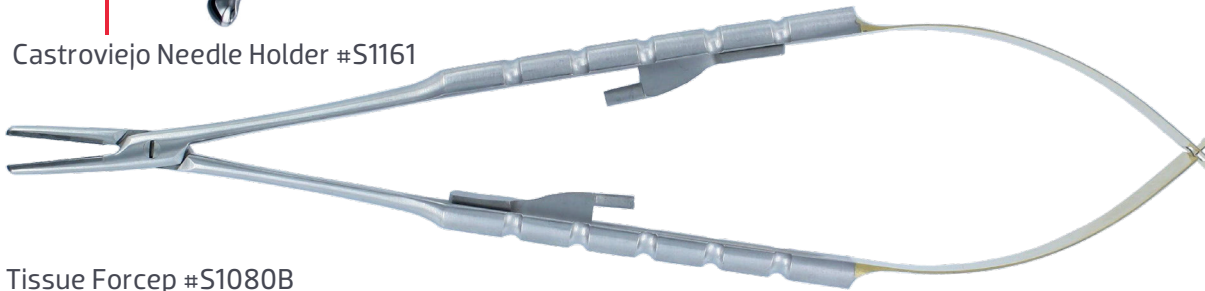
Bone Condenser #S1038



Spoon Curette #S1113



Castroviejo Needle Holder #S1161



Tissue Forcep #S1080B

Suturing



Corn Suture Forcep #S1081



Upgrade with the DR. Frawley Sinus Kit



(sku FGK-Sinus)

- Osteotomes: 2-5mm: #S1320C, S1321C, S1322C, S1323C, S1324C, S1325C
- Sinus Gold 1: #S1505G
- Sinus Gold 2: #S1506G
- Sinus Membrane Detacher: #S1309

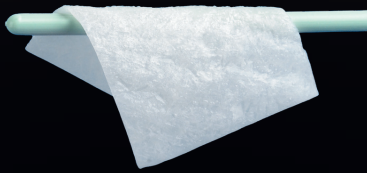
# Build

# Protect

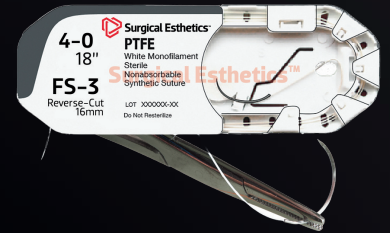
# Secure



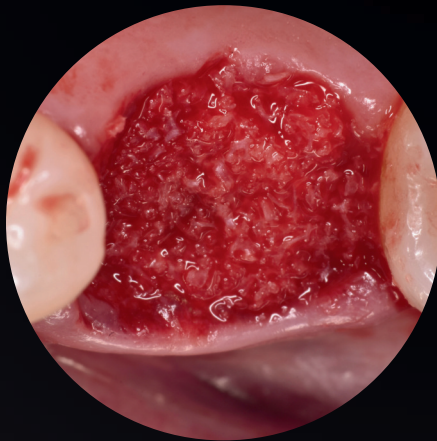
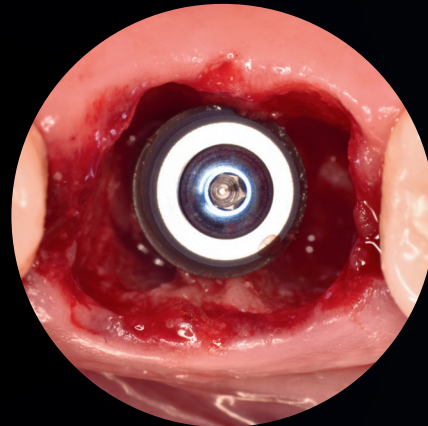
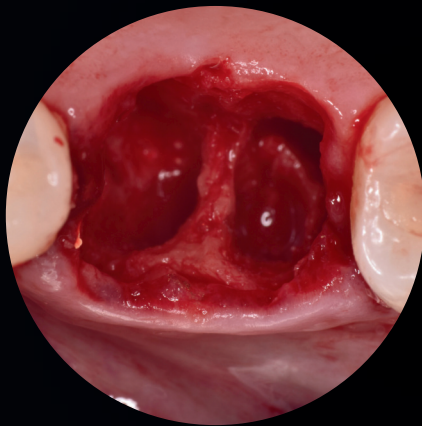
Bone Allograft



Membrane



Suture



Surgical Esthetics™





We are truly passionate about regeneration. Surgical Esthetics was founded by dentists to serve dentists. We understand the daily challenges dentists face in providing care to their patients. We also understand the helpful role a company can play in supporting dentists in delivering that care.

Everything we do is with dentists and patients in mind, not shareholders. We strive to provide the highest quality dental regenerative materials coupled with supportive education and world class customer service. The value we provide to dentists extends far beyond the products we sell.

**Dr. Shawn Frawley**

President of Sales

747-788-6449

[sfrawleydds@surgicalesthetics.com](mailto:sfrawleydds@surgicalesthetics.com)



**Justin Pugmire**

Director of Operations

818-514-9794

[justinp@surgicalesthetics.com](mailto:justinp@surgicalesthetics.com)